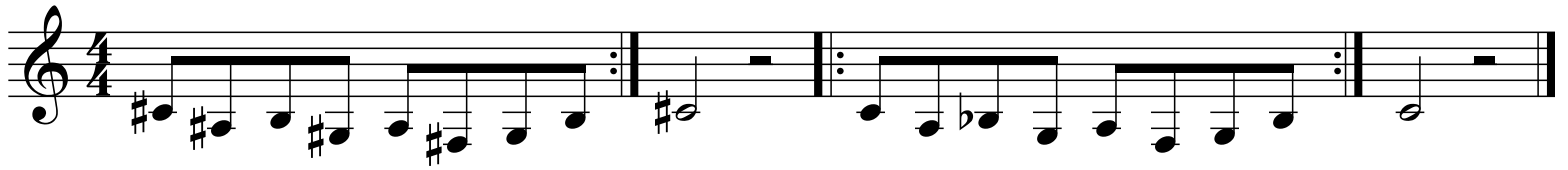


# Exercise 10.

The image displays a musical score for Exercise 10, consisting of 12 staves of music. The score is written in 4/4 time and features a variety of rhythmic patterns and melodic lines. Each staff begins with a treble clef and a 4/4 time signature. The music is organized into measures, with repeat signs (double bar lines with dots) indicating sections to be played multiple times. The notes are primarily eighth and quarter notes, with some rests. The key signature varies across the staves, including natural, one sharp (F#), and two flats (Bb, Eb). The overall structure is a sequence of 12 distinct musical phrases, each spanning one staff.



Result No. 10.

The second staff continues the melody from the first staff, starting with a key signature change to one flat (Bb). The notes are: Bb4, A4, G4, F#4, E4, D4, C4, Bb4, A4, G4, F#4, E4, D4, C4. The third staff continues with: Bb4, A4, G4, F#4, E4, D4, C4, Bb4, A4, G4, F#4, E4, D4, C4. The fourth staff continues with: Bb4, A4, G4, F#4, E4, D4, C4, Bb4, A4, G4, F#4, E4, D4, C4. The fifth staff continues with: Bb4, A4, G4, F#4, E4, D4, C4, Bb4, A4, G4, F#4, E4, D4, C4. The sixth staff continues with: Bb4, A4, G4, F#4, E4, D4, C4, Bb4, A4, G4, F#4, E4, D4, C4. The seventh staff continues with: Bb4, A4, G4, F#4, E4, D4, C4, Bb4, A4, G4, F#4, E4, D4, C4. The eighth staff continues with: Bb4, A4, G4, F#4, E4, D4, C4, Bb4, A4, G4, F#4, E4, D4, C4. The ninth staff continues with: Bb4, A4, G4, F#4, E4, D4, C4, Bb4, A4, G4, F#4, E4, D4, C4. The tenth staff continues with: Bb4, A4, G4, F#4, E4, D4, C4, Bb4, A4, G4, F#4, E4, D4, C4. The eleventh staff continues with: Bb4, A4, G4, F#4, E4, D4, C4, Bb4, A4, G4, F#4, E4, D4, C4. The twelfth staff continues with: Bb4, A4, G4, F#4, E4, D4, C4, Bb4, A4, G4, F#4, E4, D4, C4. The thirteenth staff continues with: Bb4, A4, G4, F#4, E4, D4, C4, Bb4, A4, G4, F#4, E4, D4, C4. The fourteenth staff continues with: Bb4, A4, G4, F#4, E4, D4, C4, Bb4, A4, G4, F#4, E4, D4, C4. The fifteenth staff continues with: Bb4, A4, G4, F#4, E4, D4, C4, Bb4, A4, G4, F#4, E4, D4, C4. The sixteenth staff continues with: Bb4, A4, G4, F#4, E4, D4, C4, Bb4, A4, G4, F#4, E4, D4, C4. The seventeenth staff continues with: Bb4, A4, G4, F#4, E4, D4, C4, Bb4, A4, G4, F#4, E4, D4, C4. The eighteenth staff continues with: Bb4, A4, G4, F#4, E4, D4, C4, Bb4, A4, G4, F#4, E4, D4, C4. The nineteenth staff continues with: Bb4, A4, G4, F#4, E4, D4, C4, Bb4, A4, G4, F#4, E4, D4, C4. The twentieth staff concludes with a whole rest.