

Intervals to the Perfect 4th. -- Exercise 1.

The image displays a musical exercise titled "Intervals to the Perfect 4th. -- Exercise 1." It consists of 11 staves of music, each in 4/4 time. Each staff contains a sequence of eighth notes and quarter notes, with various accidentals (sharps, flats, naturals) indicating different intervals. The exercise is designed to help students identify and understand intervals up to a perfect fourth.

Staff 1: C4, C#4, D4, D#4, E4, E#4, F4, F#4, G4, G#4, A4, A#4, B4, C5. (Intervals: 2nd, 3rd, 4th, 5th, 6th, 7th, 8th, 9th, 10th, 11th, 12th)

Staff 2: B3, Bb3, A3, Ab3, G3, Gb3, F3, Fb3, E3, Eb3, D3, Db3, C3, Cb3. (Intervals: 2nd, 3rd, 4th, 5th, 6th, 7th, 8th, 9th, 10th, 11th, 12th)

Staff 3: A3, Ab3, G3, Gb3, F3, Fb3, E3, Eb3, D3, Db3, C3, Cb3, B2, Bb2. (Intervals: 2nd, 3rd, 4th, 5th, 6th, 7th, 8th, 9th, 10th, 11th, 12th)

Staff 4: G3, Gb3, F3, Fb3, E3, Eb3, D3, Db3, C3, Cb3, B2, Bb2, A2, Ab2. (Intervals: 2nd, 3rd, 4th, 5th, 6th, 7th, 8th, 9th, 10th, 11th, 12th)

Staff 5: F3, Fb3, E3, Eb3, D3, Db3, C3, Cb3, B2, Bb2, A2, Ab2, G2, Gb2. (Intervals: 2nd, 3rd, 4th, 5th, 6th, 7th, 8th, 9th, 10th, 11th, 12th)

Staff 6: E3, Eb3, D3, Db3, C3, Cb3, B2, Bb2, A2, Ab2, G2, Gb2, F2, Fb2. (Intervals: 2nd, 3rd, 4th, 5th, 6th, 7th, 8th, 9th, 10th, 11th, 12th)

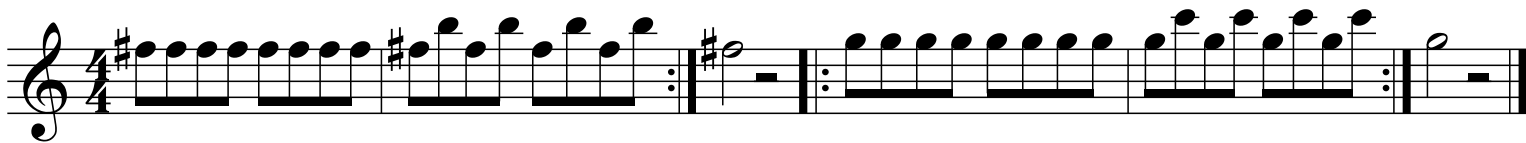
Staff 7: D3, Db3, C3, Cb3, B2, Bb2, A2, Ab2, G2, Gb2, F2, Fb2, E2, Eb2. (Intervals: 2nd, 3rd, 4th, 5th, 6th, 7th, 8th, 9th, 10th, 11th, 12th)

Staff 8: C3, Cb3, B2, Bb2, A2, Ab2, G2, Gb2, F2, Fb2, E2, Eb2, D2, Db2. (Intervals: 2nd, 3rd, 4th, 5th, 6th, 7th, 8th, 9th, 10th, 11th, 12th)

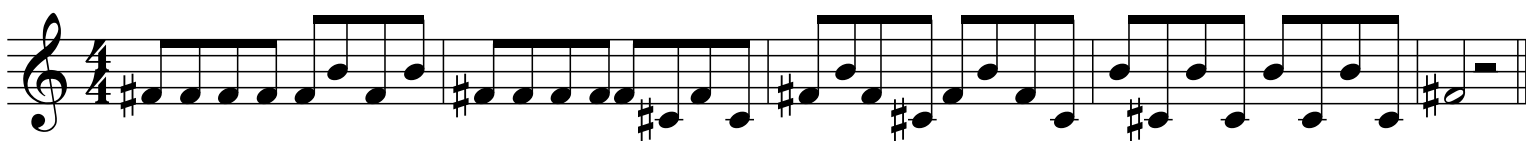
Staff 9: B2, Bb2, A2, Ab2, G2, Gb2, F2, Fb2, E2, Eb2, D2, Db2, C2, Cb2. (Intervals: 2nd, 3rd, 4th, 5th, 6th, 7th, 8th, 9th, 10th, 11th, 12th)

Staff 10: A2, Ab2, G2, Gb2, F2, Fb2, E2, Eb2, D2, Db2, C2, Cb2, B1, Bb1. (Intervals: 2nd, 3rd, 4th, 5th, 6th, 7th, 8th, 9th, 10th, 11th, 12th)

Staff 11: G2, Gb2, F2, Fb2, E2, Eb2, D2, Db2, C2, Cb2, B1, Bb1, A1, Ab1. (Intervals: 2nd, 3rd, 4th, 5th, 6th, 7th, 8th, 9th, 10th, 11th, 12th)



Intervals to the Perfect 4th. -- Exercise 2.



The image displays ten musical staves, each containing a sequence of eighth notes in 4/4 time. The staves are organized into five pairs, each pair having a different key signature:

- Staff 1: C major (no sharps or flats)
- Staff 2: B-flat major (one flat)
- Staff 3: D major (two sharps)
- Staff 4: B-flat major (one flat)
- Staff 5: D major (two sharps)

Each staff contains a sequence of eighth notes, with some staves featuring accidentals (sharps or flats) on specific notes. The sequences are as follows:

- Staff 1: C4, D4, E4, F4, G4, A4, B4, C5, B4, A4, G4, F4, E4, D4, C4
- Staff 2: Bb3, C4, D4, Eb4, F4, G4, Ab4, Bb4, C5, Bb4, Ab4, G4, F4, Eb4, D4, C4
- Staff 3: D4, E4, F#4, G4, A4, B4, C5, B4, A4, G4, F#4, E4, D4, C4
- Staff 4: C4, D4, E4, F4, G4, A4, B4, C5, B4, A4, G4, F4, E4, D4, C4
- Staff 5: Bb3, C4, D4, Eb4, F4, G4, Ab4, Bb4, C5, Bb4, Ab4, G4, F4, Eb4, D4, C4
- Staff 6: D4, E4, F#4, G4, A4, B4, C5, B4, A4, G4, F#4, E4, D4, C4
- Staff 7: Bb3, C4, D4, Eb4, F4, G4, Ab4, Bb4, C5, Bb4, Ab4, G4, F4, Eb4, D4, C4
- Staff 8: D4, E4, F#4, G4, A4, B4, C5, B4, A4, G4, F#4, E4, D4, C4
- Staff 9: Bb3, C4, D4, Eb4, F4, G4, Ab4, Bb4, C5, Bb4, Ab4, G4, F4, Eb4, D4, C4
- Staff 10: D4, E4, F#4, G4, A4, B4, C5, B4, A4, G4, F#4, E4, D4, C4