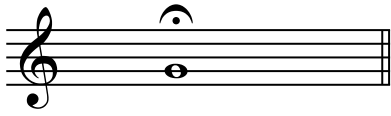


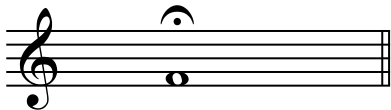
1. LET'S BLOW THE TRUMPET!



*This note is G. It is played
"open" or with no valves down.*

GOOD POSTURE!

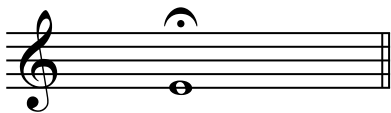
TAKE A BIG BREATH -- CHEST UP!



*This note is F. It is played
with the first valve down.*

BLOW STRONG!

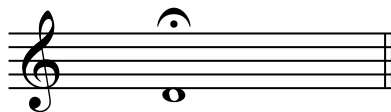
THINK "TEE" ON HIGH NOTES -- "TAW" ON LOW NOTES.



*This note is E. It is played
with the first & second valves.*

THIS IS FUN!

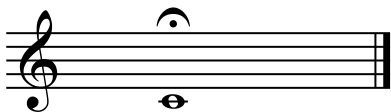
STRIKE EACH NOTE WITH THE TONGUE.



*This note is D. It is played
with the first & third valves.*

BLOW!!

HOLD EACH NOTE UNTIL ALL THE AIR IS GONE!



*This note is C. It is played
"open" or with no valves down.*

**PLAY EACH NOTE
4 TIMES.**

9. GOING HIGHER!

3 RULES TO HELP YOU PLAY HIGH NOTES:

1. Think "TEE".
2. Blow stronger as you go higher.
3. Press the mouthpiece a little firmer against the lips.

Exercise 9 consists of two staves of music in 4/4 time. The first staff contains four measures, each starting with a different note: 1. A (with a dynamic hairpin), 2. B (with a dynamic hairpin), 3. B (with a dynamic hairpin), and 4. B (with a dynamic hairpin). The second staff contains two measures, each starting with a different note: 5. C (with a dynamic hairpin) and 6. C (with a dynamic hairpin). The notes are quarter notes, and the dynamic hairpins indicate a crescendo effect.

10. THE WHOLE SCALE 8 WAYS!

NOTE TO TEACHER: You may wish to use these as a test!

1. Whole Notes: For Tone.

Exercise 10, Part 1, shows a single staff of music in 4/4 time. It contains a whole scale of whole notes, starting from C4 and ending on C5.

2. Two on a note.

Exercise 10, Part 2, shows a single staff of music in 4/4 time. It contains a whole scale of eighth notes, starting from C4 and ending on C5.

3. Three on a note.

Exercise 10, Part 3, shows a single staff of music in 4/4 time. It contains a whole scale of eighth notes, starting from C4 and ending on C5. The notes are grouped in threes, with a '3' above each group. The word 'CONTINUE' is written in the middle of the staff.

4. Four on a note.

Exercise 10, Part 4, shows a single staff of music in 4/4 time. It contains a whole scale of eighth notes, starting from C4 and ending on C5. The notes are grouped in fours, with a '4' above each group. The word 'CONTINUE' is written in the middle of the staff.

5.

Exercise 10, Part 5, shows a single staff of music in 4/4 time. It contains a whole scale of eighth notes, starting from C4 and ending on C5.

6.

Exercise 10, Part 6, shows a single staff of music in 4/4 time. It contains a whole scale of eighth notes, starting from C4 and ending on C5.

7.

Exercise 10, Part 7, shows a single staff of music in 4/4 time. It contains a whole scale of eighth notes, starting from C4 and ending on C5.

8.

Exercise 10, Part 8, shows a single staff of music in 4/4 time. It contains a whole scale of eighth notes, starting from C4 and ending on C5.

Apply these 4 rhythms to every note of the scale.