

Lesson 5.

1. Wind Power.

Musical notation for the 'Wind Power' exercise, consisting of three staves in 4/4 time. The first staff begins with a treble clef and a 4/4 time signature. The melody features a series of eighth notes with slurs and accents, including a chromatic descent in the second measure. The second staff continues the melodic line with similar phrasing. The third staff concludes the exercise with a final melodic phrase. A note in the second measure of the third staff is circled, with a text annotation below it: "(This is Pedal F, played 1st. valve.)"

2. High Note Routine.

Musical notation for the 'High Note Routine' exercise, consisting of five staves in 4/4 time. The exercise is a chromatic scale starting on a middle C. The first staff shows the initial ascent and descent. The second staff continues the scale with various accidentals. The third staff shows the scale moving into higher registers. The fourth and fifth staves complete the routine with further chromatic patterns and rests.

To Relax the Lip.

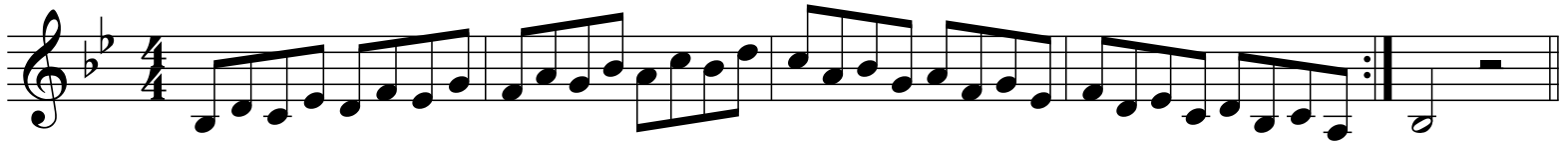
Musical notation for the 'To Relax the Lip' exercise, consisting of two staves in 4/4 time. The exercise features a series of eighth notes with slurs, designed to relax the lip. The first staff shows a chromatic pattern, and the second staff continues with similar phrasing, including a chromatic descent.

3. Lip Flexibility.

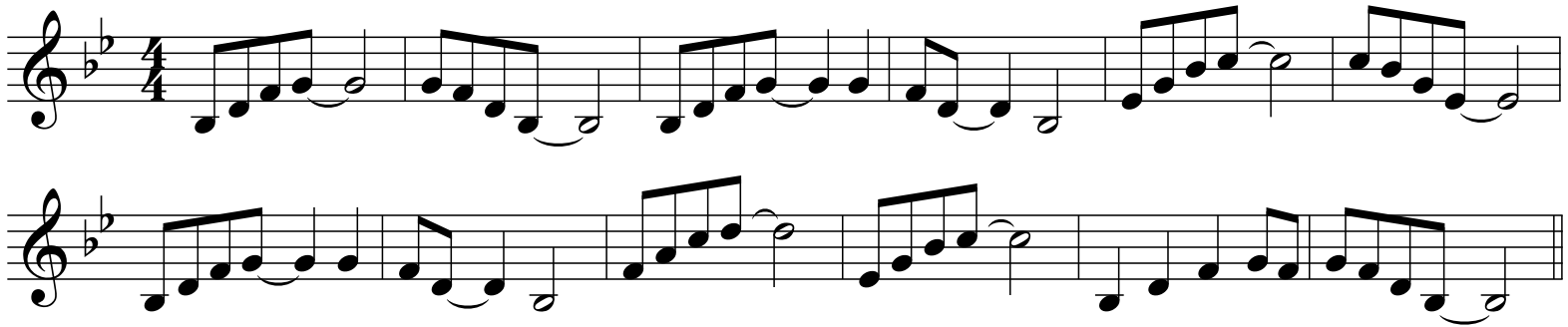


Continue down, using the 7 basic valve combinations.

4. B flat Scale in Thirds.



5. Blues Style Major 6th. Chords in B flat.



6. Diatonic Intervals in B flat -- Pattern 2.



7. Chromatic Exercise in B flat.



Coronation March.

Meyerbeer

Musical score for Coronation March by Meyerbeer. The score is written in 2/4 time and features a key signature of two flats (B-flat and E-flat). It consists of three staves of music. The first staff begins with a triplet of eighth notes. The second staff also contains a triplet of eighth notes. The third staff concludes with a triplet of eighth notes and a final note with a fermata.

The Lord's Prayer.

Musical score for The Lord's Prayer. The score is written in 4/4 time and features a key signature of two flats (B-flat and E-flat). It consists of six staves of music. The first staff begins with a triplet of eighth notes. The second staff contains a long melodic line with a fermata. The third staff features a series of notes with a fermata. The fourth staff continues the melodic line. The fifth staff begins with a triplet of eighth notes. The sixth staff concludes the piece with a long melodic line and a fermata.